

United Way



United Way of Kaw Valley

IMPACT UPDATE 2023



UNITED WAY OF KAW VALLEY

CONNECTING COMMUNITIES

What an amazing year! July 2022 to June 2023 had more thrills than Worlds of Fun. We started as United Way of Greater Topeka and officially became United Way of Kaw Valley in September. We finished our first 10-year impact cycle in Shawnee County. We continued to build community capacity as the administrator of the AmeriCorps program in Douglas County. We welcomed new board members from Douglas County.

But for everything that is new, one constant remains. United Way is here to connect our communities. The challenges we address through our partnerships and funding are at the very heart of eliminating poverty and ensuring equity. We know that strong, healthy and equitable communities require an unbreakable network of support, among nonprofits, with local governments, with the business community and even between our counties.

None of this happens without you. Donors at all levels help us invest in work that gets kids ready to succeed in school, that helps students prepare to succeed after graduation, that helps adults access basic services when times are hard and pursue a better life when the time is right. Volunteers make necessary work easier and expand the capacity of nonprofits, helping them serve more of our neighbors in need. And advocates, our voices in the community, help our policy makers understand the importance of systems change, so together we can remove barriers and help individuals, neighborhoods and communities to thrive, not just survive.

Thank you for trusting United Way. We know you have many options for your time, talent and treasure, and we are honored to work with you and work for you.

With gratitude,



CONTENTS

UWGT 10-Year Impact Overview

Navigating the Pandemic

Merger: Becoming United Way of Kaw Valley

2022-23 Impact Recap

Board of Directors

Financials

Workplace Campaign

Tocqueville & Legacy Donors

Looking Ahead



**UWKV President
and CEO
Jessica Lehnherr**

UWGT IMPACT OVERVIEW

The first decade of impact work at United Way of Greater Topeka (2012-2022)

EARLY EDUCATION

Increase access to preschool/ school readiness / get more kids ready to succeed in kindergarten / help parents teach kids how to learn / increase access to books / support home visitation programs that focus on pre-literacy and school readiness / connect parents to resources

Children/Parents/Educators Served: 4,594

Impact Grant Investment: \$4.5 million

Partners: Child Care Aware of Eastern Kansas, Community Action Head Start, Topeka Public Schools (Pine Ridge Prep Preschool, Parents as Teachers), YWCA of Northeast Kansas, TDC Learning Centers, Mathes Early Learning Center (USD 345), A Child's World, Family Service & Guidance Center

ON-GRADE ACHIEVEMENT

Bolster individual schools' success with reading and math supports / increase student success through one-to-one and small-group tutoring / improve school attendance and learning environment by supporting a student's whole family / support and advocate for out-of-school learning opportunities

Children/Families Served: 4,120

Impact Grant Investment: \$3.5 million

Partners: Boys & Girls Clubs of Topeka, Communities in Schools of Mid-America, Kansas Big Brothers Big Sisters (Shawnee County), Kansas Children's Service League, YMCA of Topeka, YWCA of Northeast Kansas, Topeka Public Schools, Seaman Schools, Shawnee Heights Schools

SUCCESSSES AND INSIGHTS

When partners are aligned and focused on transformational change in just one small category, an entire neighborhood can benefit from the resulting synergy. In Pine Ridge, the story went from a Parents as Teachers program in the former community center to one preschool classroom to several classrooms in multiple buildings. From the conversations and relationships surrounding Pine Ridge Prep Preschool, the resulting partnerships included a wellness center-turned acute care clinic, business incubator, a resident council and a vibrant community gathering place hosting events like National Night Out, Trick-or-Treat on the Born Learning Trail and summer camps. Partnerships blossomed with Baker University nursing students, Washburn University leadership students and nursing students as well as with local businesses.



81%
OF CHILDREN SERVED WERE ON TARGET WITH PRE-LITERACY MILESTONES

68%
OF CHILDREN SERVED ARE KINDERGARTEN READY

70%
OF CHILDREN SERVED SHOWED IMPROVED ATTENDANCE

65%
OF FAMILIES/CAREGIVERS CONNECTED TO NEEDED SUPPORT SERVICES

Get more details from our 10-year impact report online at: uwkawvalley.org/finances-reports.

UWGT IMPACT OVERVIEW

The first decade of impact work at United Way of Greater Topeka (2012-2022)

FINANCIAL STABILITY

Help adults find and keep household-sustaining employment, help adults learn to manage expenses/pay down debt and start saving, teach teens financial literacy concepts, build partnerships that help individuals improve financial stability

Individuals Served: 7,044

Impact Grant Investment: \$1.34 million

Partners: Housing and Credit Counseling, Inc., Topeka Rescue Mission, Communities in Schools of Mid-America, Jayhawk Area Council—Boy Scouts, Junior Achievement of Kansas

HEALTH

Eat, Move, Live: Increase access to and participation in physical activity and access to and consumption of healthy food and drink

Individuals Served: 1,730

Impact Grant Investment: \$176,400 (6 years)

Partner: Florence Crittenton/HEAT Up Topeka

Youth Substance Abuse Reduction

Individuals Served: not determined

Impact Grant Investment: \$225,000 (3 years)

Partner: Prevention and Recovery Services

SUCCESSSES AND INSIGHTS

All impact work is not created equal. The cost of creating change varies widely with the intensity and personalization needed to intervene. The cost per person and time involved to offer early-stage financial literacy education to students is significantly less than the time and cost to mentor an individual who is attempting to climb out of debt.

Most of the work that needs doing must be done collectively and collaboratively to truly create change. For example, one agency investing in the work of substance abuse reduction will not move the needle at the community level.



83%
OF ADULTS SERVED TOOK ACTION TO PAY DOWN DEBT

92%
OF TEENS SERVED INCREASED THEIR FINANCIAL LITERACY



Get more details from our 10-year impact report online at: uwkawvalley.org/finances-reports.

UWGT IMPACT OVERVIEW

The first decade of impact work at United Way of Greater Topeka (2012-2022)



BASIC NEEDS

Food Assistance

Number Served: 824,929

Investment: \$1,024,781

Healthcare & Prescription Assistance

Number Served: 48,803

Investment: \$718,900

Rent & Utilities Assistance

Number Served: 48,904

Investment: \$869,845

Safety from Domestic Violence

Number Served: 18,244

Investment: \$507,227

Shelter (2012-2016)

Number Served: 15,028

Investment: \$378,990

Basic Needs Grant Partners

American Red Cross, Boys and Girls Club, Catholic Charities, Cerebral Palsy Research Foundation of Kansas, Community Action, Community Resources Council, Doorstep, Grace Med, Harvesters, Jefferson County Service Organization, Kansas Legal Services, Let's Help, LifeHouse, LULAC, Meals on Wheels, Mirror Inc., Positive Connections, Salvation Army, Topeka Housing Authority, Topeka Rescue Mission Ministries, Valeo Behavioral Health Care, Willow Domestic Violence Center, YWCA Center for Safety and Empowerment

VOLUNTEER ENGAGEMENT

- Established Ad Astra Volunteer Honors
- Increased use and value of TopekaVolunteers.org
- Re-launched Board Leadership Training
- Worked in tandem with Resource Development to engage select workplace campaigns year-round
- Completed requirements and received designation as a Service Enterprise Organization
- Continued the tradition of Nancy Perry Day of Caring despite pandemic complications

*Based on the average Independent Sector Value of \$25.83/hour

184,495
VOLUNTEER OPPORTUNITIES

500,705
VOLUNTEER HOURS

\$12,933,197*
ECONOMIC IMPACT



COVID-19 ADAPTATION

A global pandemic creates challenges and opportunities

EFFECT ON OPERATIONS

In February 2020 we held our breath as the Covid-19 pandemic descended. Staff moved to remote work. We learned to Zoom. We found new ways to do all the tasks. Like most of the country, we bounced in and out of remote work. Some of our staff would eventually pivot to permanent or nearly permanent remote work.

Amazingly, we were able to continue to offer Christmas Bureau help, but for one year limited to gift cards and food baskets instead of the normal adopt and shop approach.

But without travel time and expense to hinder us, we also found new time to connect with our nonprofit community and partners. A weekly problem-solving and coordination call that began in March 2020 continues more than three years later and is attended by 30-40 people each week from multiple sectors.

COVID EMERGENCY FUND

The community was invited to contribute flexible and accessible mini-grants to nonprofit partners. We raised \$30,000, including a \$5,000 match from our Women United group.

EFFECT ON IMPACT GRANTS TO PARTNERS

We were just at the start of a strategic planning cycle at the beginning of Covid. A major component of that work was to plan for the next evolution of our impact work. Constantly shifting conditions for all our partners made creating an effective new funding approach seem tone-deaf and burdensome. Instead, we created a bridge funding opportunity for existing grantees. This two-year patch allowed their services to continue, though many had to make major changes to service delivery. It also allowed us time to fully understand the lessons of the first impact investment cycle and solicit community and partner feedback on how United Way could best serve the community after the pandemic.



YOUR COVID RELIEF DOLLARS AT WORK



Permanent internet hub at Westminster Presbyterian Church to help students do online school work and now providing internet access to anyone who needs it.



Food, diapers, and other supplies for the Perry United Methodist Church Blessing Box, helping at-risk families and seniors in USD 343.



Assistance dollars for Jackson County businesses and families impacted by loss of business revenue or income due to COVID.



Helping Big Brothers Big Sisters offset the cost of virtual platforms used to ensure supervision efforts were able to continue. This helped maintain child safety, and helped with the matching of kids on the BBBS waitlist.



MERGER

United Way of Greater Topeka and United Way of Douglas County become United Way of Kaw Valley

In October 2022, after almost a year of conversation and collaboration, United Way of Douglas County merged with United Way of Greater Topeka to form United Way of Kaw Valley (UWKV). UWKV serves as a grant maker, community convener, volunteer organizer and strategic partner for the nonprofit sector in Shawnee, Douglas, Jackson and Jefferson counties in northeast Kansas. Donor dollars are invested locally and support a broad range of initiatives that benefit the whole family in education, financial stability and health, as well as racial equity and family supports/basic needs.

Existing work in Jackson County provided a framework for local control of funds in the merger. Donations given in one county stay with that county unless a donor specifies otherwise, and donors always have a choice.

By the end of June 2023, the new organization had completed rebranding and reorganization, including the transition of the Lawrence office to a new home on Iowa Street. As staff move on to new opportunities, position descriptions are constantly reviewed to take advantage of realignment and new opportunities.

VOLUNTEER GOVERNANCE

The new organization has a single volunteer Board of Directors with representatives from all four counties. Ideally, board chair responsibilities will alternate between members from Douglas and Shawnee Counties. The three counties currently granting dollars also have Advisory Councils whose members guide the investment priorities in their respective counties.



United Way
of Kaw Valley

SHAWNEE

DOUGLAS

JACKSON

JEFFERSON

2022-23 IMPACT

SHAWNEE/JEFFERSON COUNTIES



Investments ending June 30, 2023, were two-year bridge funding grants provided to existing partners during the COVID-19 pandemic. Originally, new strategies and contracts were set to begin in July 2021, following the end of the Community Impact 10-Year Strategic Plan. However, after internal discussion and meetings with partners, it was determined that two-year bridge funding would provide the stability and resources grant partners needed to weather the pandemic.

We reported outcomes from nine investment partners in three areas: Early Education, On-Grade Achievement, and Financial Stability. The annual investment and impact highlights follow.

Early Education - \$258,654

- Among the nearly 1,000 children served, nearly 80% showed improvement in the development of pre-literacy skills. 80% entered kindergarten on target with school readiness skills.
- 93% of parents served through home visitation used knowledge to actively engage with their child to help them get ready for kindergarten.

On-Grade Achievement - \$159,595

- 93% of students served had fewer in-school behavior referrals.
- 90% of students showed improvement in school attendance.

Financial Stability - \$126,600

- Nearly 80% of adults completed job skills training and nearly 7 in 10 were awarded jobs following training completion.
- 3 in 4 adults in a financial literacy program reduced consumer debt within six months.
- Nearly 8 in 10 youth served increased their financial literacy.

Additionally, we continued to support Basic Needs, granting out \$293,067 each year. This will be the final grant cycle in which outcomes are not required for Basic Needs investment. **Basic Needs becomes part of our Whole Family impact work and will be called Family Supports.**



2022-23 IMPACT

DOUGLAS COUNTY

Family Stabilization and Anti-Poverty

Total Investment: \$ 485,000

Partners: Ballard Center, Big Brothers Big Sisters, Catholic Charities, Community Children's Center, Communities in Schools, Herman's Kitchen, Just Food, Lawrence Community Center, LINK, Positive Bright Start, Success by 6, Sunrise, Tenants to Homeowners, Van Go, Willow Domestic Violence Center

2022 Racial Equity Grants

Total Investment: \$36,000

Ascending Stars Consulting Group
BIPOC-Yoga for Healing
Clare's Community Closet
CommUNITY Steppers
EKAN
Herman's Place
Lawrence KS Juneteenth Org.
Kindness is the Key
Sisters with a Purpose

2023 Racial Equity Grants

Total Investment: \$30,000

ALIVE, Inc.
Herman's Place
Indigenous Community Center
Kindness is the Key LFK
Lawrence KS Juneteenth Org.
Life Restoration Ministries
Indian United Methodist Church
Sanctuary Alliance

UWKV manages AmeriCorps in Douglas County

Number of Members: 15

Agencies Served: Ballard Community Center, Children's Community Center, Ecumenical Campus Ministries (ECM), Habitat for Humanity, Heartland Clinic, Lawrence Community Shelter, Lawrence Douglas County Housing Authority, Lawrence Douglas County Public Health

JACKSON COUNTY

Food Assistance

Number Served: 6,730

Investment: \$7,200

Healthcare & Prescription Assistance

Number Served: 23

Investment: \$4,500

Rent & Utilities Assistance

Number Served: 116

Investment: \$3,250

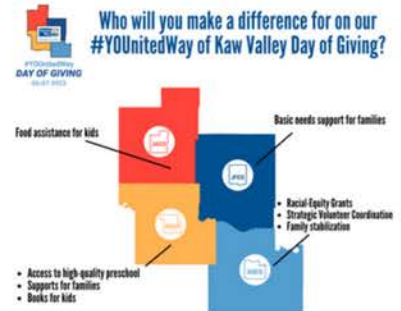
Jackson County Christmas Bureau: \$1,000

Holton High School Washburn Tech Assistance Fund: \$2,500

Partners: Catholic Charities, Harvesters, Jackson County Ministerial Alliance

Partners: NEK Multi-County Health Department

Partners: Jackson County Ministerial Alliance, NEK-CAP



Wednesday, June 7 UWKVDayOfGiving.org



2022-23 IMPACT

STRATEGIC VOLUNTEERING

Overall Service Area Volunteer Impact

Total Volunteers: 24,981

Total Hours: 297,196

Total Economic Impact: \$9,793,379.34

This number includes grant and AmeriCorps member partners but does not include AmeriCorps Members' hours.



Digital Engagement/Management

TopekaVolunteers.org

- 1,331 opportunity responses
- 2,477 hours served

VolunteerDouglasCounty.org

- 565 opportunity responses
- 1,529 hours served

Internal Volunteer Service

These volunteers serve on our Board of Directors, Advisory Councils, and committees

Douglas County

49 volunteers
200 hours

Jackson County

38 volunteers
150 hours

Shawnee County

362 volunteers
3,746 hours

Capacity Building with GROW

(Growing Resilient Organizations with United Way)

Board Leadership Training, July and January

55 participants (9 hours of training)

Topeka Volunteers Volunteer Fair, April 20 at Fairlawn Plaza

49 organizations, 450 participants

Community Navigator Program

Program launched with 8 volunteer navigators at three sites (1,869 hours)

Ad Astra Honors Volunteer Recognition

Service to Community: Kirstianna Guerrero, Lauren Wolf

Marge Heeney Internal Volunteer Award: Jim Daniel

Wallace Galluzzi Volunteer of the Year (DGCO): Darlene Morell, Wendo Kimori



BOARD OF DIRECTORS

JULY 2022 - JUNE 2023*

Officers

Chair Matt All, Blue & Cross Blue Shield of Kansas
Past Chair Susan Duffy, Kansas Corporation Commission
Chair-Elect Marc Fried, Washburn University
Treasurer/Finance Chair Stephanie Flood, Capitol Federal

Term Expiring – 2023

Will Lawrence, Office of the Governor/IBEW Local 304
Jared Rudy, Norsemen Brewing Company/Evergy
Shayden Hanes, WU Leadership Student
Megan Burgess, Hill's Pet Nutrition

Term Expiring – 2024

Marlou Wegener, Blue & Cross Blue Shield of Kansas
Matt Dinkel, Security Benefit
Morgan Franklin, Laird Noller
John Fager, CoreFirst Bank & Trust
Adrian Revels, Goodyear (Local 307)
Freddy Mawyin

Johnathan Sublet, Fellowship Hi-Crest Church
Amy Stutzman, Hill's Pet Nutrition
Bryce Liedtke, WU Leadership Student

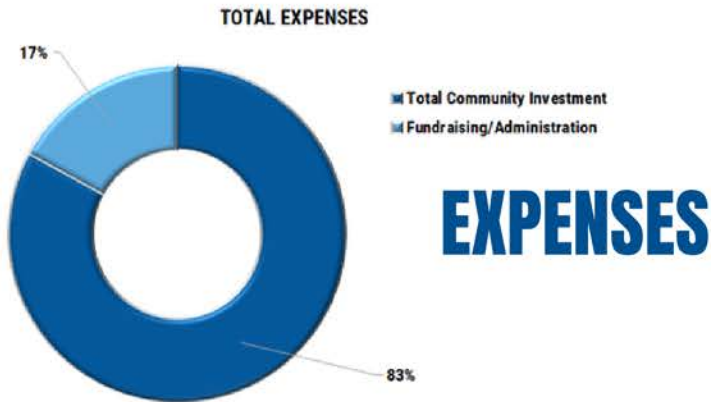
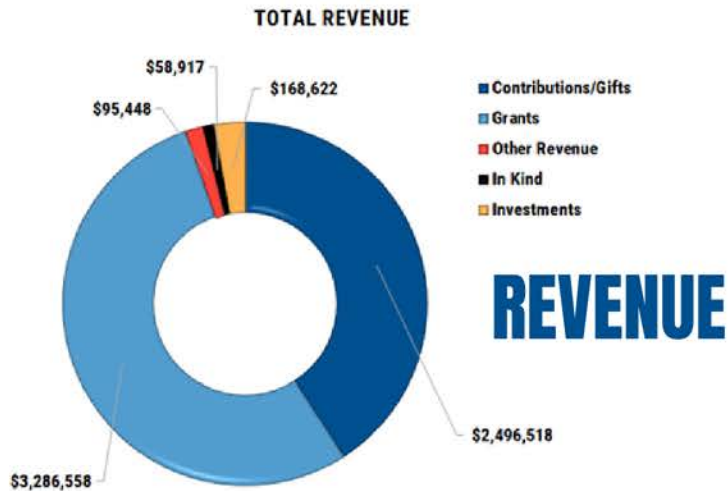
Term Expiring – 2025

Mario Edmonds, Goodyear Tire & Rubber Co.
Trey George, THA, Inc
Bill Cochran, Volunteer
Sarah Sharp, Topeka Public Schools
Jacque Russell, City of Topeka
Doria Watson, Kansas Department of Transportation
Tonya Barta, Farmers State Bank
Judy Corzine, Stormont Vail Health
Joe Beasley, BOK Financial Private Wealth
Mina Bischmann, Langston Hughes Elementary
Kate Campbell, Volunteer
Peggy Johnson, Volunteer
Beth Llewellyn, Relationships & Strategy Consultant
Krystal Loomis, Volunteer
Brooklynne Mosley, GPS Impact
Ward Slocum, Black Hills Energy
David Jordan, United Methodist Health Ministry Fund



**Board member list includes Douglas County volunteers who joined upon formalization of the merger to create United Way of Kaw Valley. Board member affiliations are reported as of their term of service.*

FINANCIALS



These financials represent a complex year with the merger of financial information from United Way of Greater Topeka and United Way of Douglas County. Full financials are posted as they are approved by the UWKV Board of Directors at uwkawvalley.org/finances-reports.



WHAT YOU MADE POSSIBLE

2022 - 2023 CAMPAIGN RESULTS

\$1,980,780.94



Because of you...
547 kids will have access to early learning, home visitation, and other services to prepare them for school



\$597,289.45

Because of you...
Hundreds of kids and families have access to food assistance, helping to meet one of their most basic needs



WORKPLACE CAMPAIGN

TOP 15 LARGE COMPANY

Hill's Pet Nutrition, Inc., Topeka
Capitol Federal Savings, Topeka
Blue Cross & Blue Shield of Kansas, Topeka
The Goodyear Tire & Rubber Co., Topeka
Security Benefit, Topeka
Stormont-Vail Health, Topeka
ONE Gas, Inc., Topeka
BNSF Railway, Topeka
Hallmark, Lawrence
Dillon's Stores, Topeka
Topeka Public Schools - USD #501
Fidelity State Bank & Trust Co., Topeka
Garmin, Lawrence
CoreFirst Bank & Trust, Topeka
Dillon's Stores, Lawrence

TOP 15 SMALL BUSINESS

Fidelity State Bank & Trust, Topeka
Custom Mobile, Lawrence
CEK Insurance, Lawrence
Kansas Hospital Association, Topeka
Stephens Real Estate, Lawrence
Denison State Bank, Holton/Topeka/Meriden
Greater Topeka Partnership, Topeka
Clayton Wealth Partners, Topeka
Kansas Mutual Insurance Company, Topeka
BITCO, Topeka
Kansas Health Institute, Topeka
Farmer's State Bank, Holton
Polo Custom Products, Topeka
O'Malley's, Lawrence
Lawrence Chamber of Commerce, Lawrence



Thank you to every business and organization that ran a workplace campaign! The United Way tradition of workplace giving remains a hallmark of our network, offering an engaging annual opportunity for employees to work together to benefit the community.

We are honored to work with large and small businesses to help their employees understand the challenges facing their community and connect them to solutions and volunteer opportunities.

In addition to running a workplace campaign, the companies noted in the Year-Round Engagement category have made an exceptional commitment to a community partner through a relationship facilitated by United Way of Kaw Valley.

YEAR-ROUND ENGAGEMENT

BNSF
Blue Cross & Blue Shield
of Kansas
Hill's Pet Nutrition
Southwest Publishing*
Clayton Wealth Partners
US Bank

**Southwest Publishing will run its first workplace campaign in 2023-24!*



TOCQUEVILLE DONORS

The Tocqueville Society is comprised of our community's most generous philanthropists who are committed to making a difference where they live and work. Members of this elite group best utilize the power of United Way to make a significant impact in our community. Tocqueville members contribute \$10,000 or more annually to United Way. These contributions make a lasting impact in the community.



Bob Wheeler
Dorothy Daugherty
Doug Wolff
Gary & Becki Dick
Jeff & Mary Weinberg
Joe & Janet Aleshire
John B. Dicus
Jonathan Slemmer
Judy Corzine

Kaye & Chris Drahozal
Kurt Schueler & Brian Becker
Peggy & Larry Johnson
Randy & Debra Clayton
Steve Noller
The Ethel & Raymond F. Rice Foundation
Val & Beth Stella
Wint & Mary Winter



OLIVERIUS SOCIETY

Members of the Oliverius Society have pledged a legacy gift to ensure that the evolving needs of everyone in our community will be met.

Gay Crawford
Nell Levy
Maynard and Sarah Oliverius

LOOKING AHEAD

New Whole Family-focused impact grants in Shawnee County. As part of their grant award, these partners are participating in the Whole Family Coalition, which connects stakeholders from diverse service agencies and government offices. Together, the members of this coalition seek more efficient and coordinated care for our neighbors in need. This group will also recommend policy changes at the local, state and national level to nurture strong, healthy and equitable communities. Grants started July 1, 2023.



Renewed focus on workplace campaign in Douglas County. Our ability to issue meaningful grants in 2022-23 was hampered by staff and leadership turnover in previous years. Now with more staff available to work with Douglas County businesses, we hope to start building back the energy and results of the annual campaign.



Renewed investment in Douglas County impact work. As we rebuild support among Douglas County businesses and donors and the campaign rebounds, we will be able to increase the amount of available grants. New grant RFPs will be released in 2024 with funding set to begin in July.



Continued conversations around United Way partnerships in Jefferson and Jackson counties. Please contact us if you'd like to be more involved as a donor, volunteer or advocate!

CONTACT INFORMATION

United Way of Kaw Valley
785.273.4804
uwkawvalley.org

Topeka Office
1527 SW Fairlawn Rd.
Topeka, KS 66604



Lawrence Office
1127 Iowa St.
Lawrence, KS 66044



United Way of Kaw Valley

United Way



United Way of Kaw Valley



UNITED WAY OF KAW VALLEY

Creating and cultivating an unbreakable network of support for a strong, healthy and equitable community.